

Preparation unit—FR.L combination



GFC Series

Specification

Model	GFC200-06	GFC200-08	GFC300-08	GFC300-10	GFC300-15	GFC400-10	GFC400-15	GFC600-20	GFC600-25	
Fluid	Air									
Port size	1/8"	1/4"	1/4"	3/8"	1/2"	3/8"	1/2"	3/4"	1"	
Filtering grade	40 μm or 5 μm									
Pressure range	Semi-auto and automatic drain: 0.15~0.9MPa(20~130psi); Manual drain: 0.05~0.9MPa(7~130psi)									
Max. pressure	1.0MPa(145psi)									
Proof pressure	1.5MPa(215psi)									
Temperature range	-20~70°C									
Capacity of drain bowl	10CC		40CC		80CC		230CC			
Capacity of oil bowl	25CC		75CC		160CC		380CC			
Recommended lubricant	ISO VG 32 or equivalent									
Weight	430g			980g			1950g		4320g	
Constitute	Filter-Regulator	GFR200-06	GFR200-08	GFR300-08	GFR300-10	GFR300-15	GFR400-10	GFR400-15	GFR600-20	GFR600-25
	Lubricator	GL200-06	GL200-08	GL300-08	GL300-10	GL300-15	GL400-10	GL400-15	GL600-20	GL600-25

Ordering code

GFC200 08 M L F 1 W T K

Model

GFC200:	G200 Series FR.L unit
GFC300:	G300 Series FR.L unit
GFC400:	G400 Series FR.L unit
GFC600:	G600 Series FR.L unit

Code of reflux valve ②

Blank:	No reverse flow valve is attached
K:	Reverse flow valve is attached

Thread type

T:	NPT
G:	G

Filtering grade

Blank:	40 μm
W:	5 μm

Scale

1:	MPa
2:	psi
3:	bar

Pressure gauge shape

F:	Square
C:	Circular

Type code

Blank:	Standard
L:	Lower pressure ①

Pressure gauge

Blank:	Pressure gauge
N:	No pressure gauge

Drain type

Drain type	Adaptable product's series
Blank: Semi-auto drain	GFC200, GFC300
M: Manual drain	GFC400, GFC600
A: Automatic drain	GFC300, GFC400, GFC600

Port size

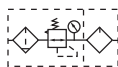
Model	Port size
GFC200	06: 1/8"
	08: 1/4"
GFC300	08: 1/4"
	10: 3/8"
	15: 1/2"
GFC400	10: 3/8"
	15: 1/2"
GFC600	20: 3/4"
	25: 1"



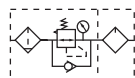
GFC

Symbol

No reflux valve is attached



Reflux valve is attached



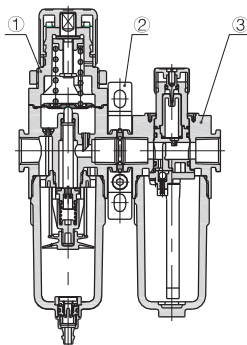
Product feature

1. Quick and reliable mounting clamps makes it convenient to install and use.
2. The performance of pressure adjustment is reliable with high precision.
3. The efficiency of eliminating moisture and solid grain is high.
4. Three drain types are available: manual drain, semi-auto drain and automatic drain.

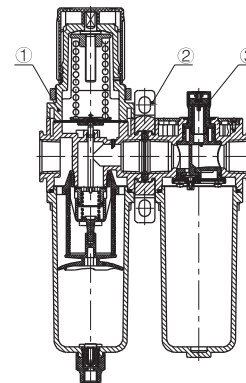
① The maximum work pressure of lower pressure type is 0.4MPa(58psi). ② Please refer to page 144 for details of reflux valve.

Inner structure

GFC200



GFC600

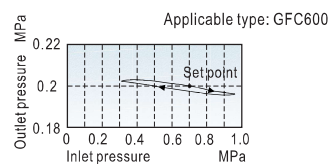
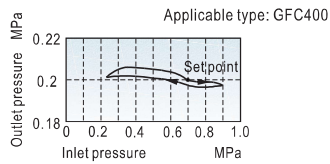
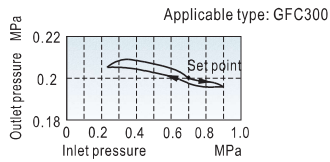
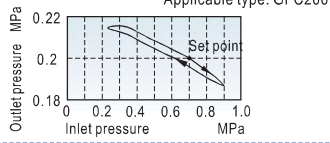


No.	①	②	③
Item	G series filter-regulator	Bracket	G series lubricator

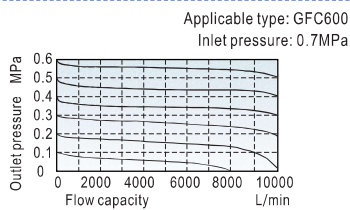
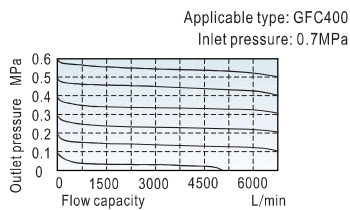
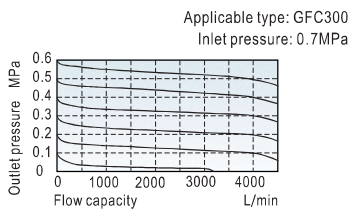
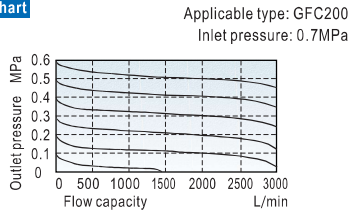
GFC Series

Pressure and feature of flow

Pressure chart

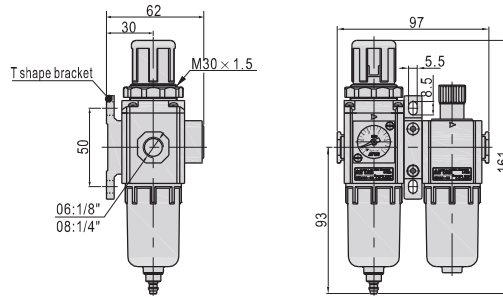


Flow chart

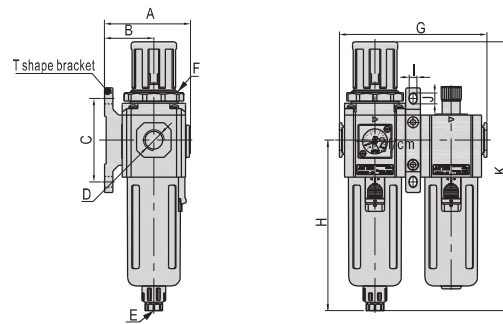


Dimensions

GFC200

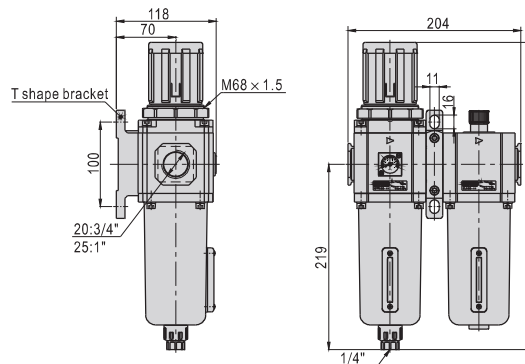


GFC300/GFC400



Model\Item	A	B	C	D	E	F	G	H	I	J	K
GFC300-08	72	41.5	70	1/4"	1/8"	M40x1.5	124	143	6.5	9	225.5
GFC300-10	72	41.5	70	3/8"	1/8"	M40x1.5	124	143	6.5	9	225.5
GFC300-15	72	41.5	70	1/2"	1/8"	M40x1.5	124	143	6.5	9	225.5
GFC400-10	89	50	80	3/8"	1/4"	M55x2.0	164	166.5	8.6	12	270.5
GFC400-15	89	50	80	1/2"	1/4"	M55x2.0	164	166.5	8.6	12	270.5

GFC600



GFC